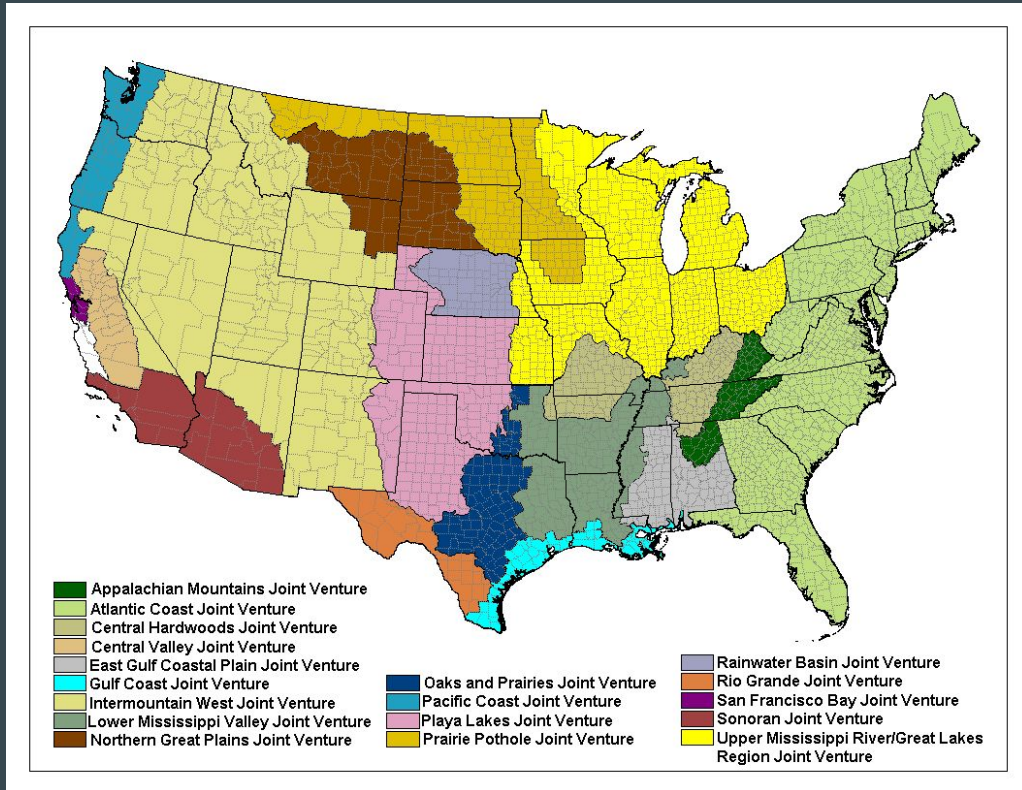




Strategies for Collaborative Conservation with the Intermountain West Joint Venture

Mandi Hirsch & Joy Morris

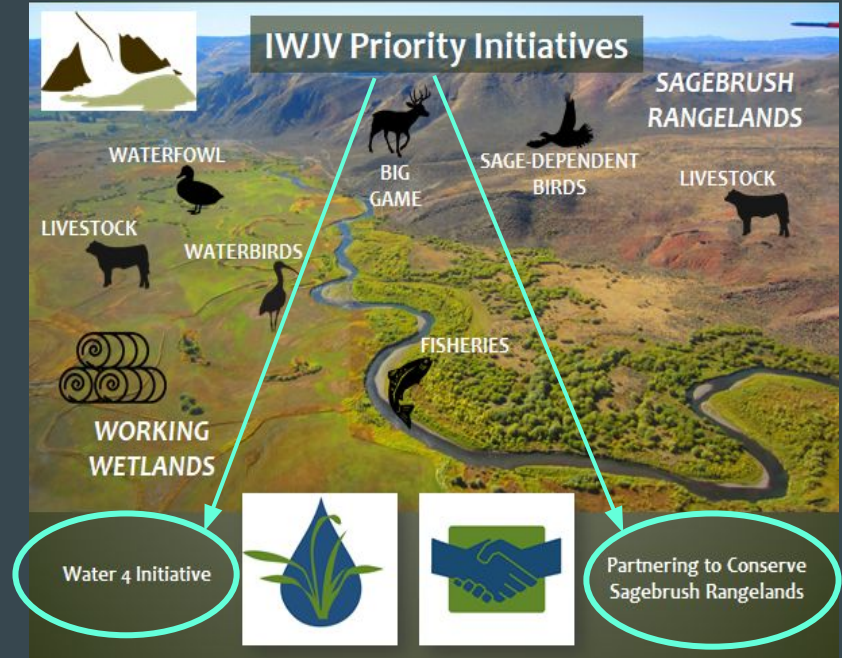
Joint Ventures



- Self-directed public-private partnerships
- Born out of NAWMP - 1980s
- All-bird /seamless network - partnerships that focus on areas or species of concern
- Two principles:
 - Science foundation to conserve continental bird populations at desired levels
 - Partnership-based habitat conservation delivery – leveraging resources



Intermountain West Joint Venture



Mission:
To conserve priority bird habitats through partnership-driven, science-based projects and programs

Partnering to Conserve Sagebrush Rangelands

REMOVE
EXPANDING
CONIFERS



REDUCE
THE RISK OF
WILDFIRE
AND INVASIVE
WEEDS



RESTORE
AND ENHANCE
WET MEADOWS
AND RIPARIAN
AREAS




PROMOTE
OUTCOME-BASED
GRAZING



PARTNER
ON BIG GAME CORRIDOR
CONSERVATION



Using the latest science and decision support tools to put conservation and restoration actions on the ground where they are needed most



**OUR PARTNERSHIP MODEL AT WORK:
3 INGREDIENTS FOR SUCCESS**

PUTTING SCIENCE INTO PRACTICE

- Develop tools to put conservation and restoration resources where they're needed most.
 - Track progress jointly on public and private lands.
 - Quantify the ecological benefits of conservation practices.
 - Transfer the latest science, technology, and best practices among partners and practitioners.

RESTORING & CONSERVING SAGEBRUSH HABITAT

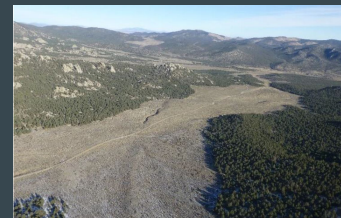
- Leverage shared resources to help put projects on the ground.
 - Support efforts to maximize the results of agencies, organizations, and individuals in accomplishing local conservation priorities.
 - Increase capacity by helping establish new positions, or supporting existing positions, that can implement projects and partnerships across ownership boundaries.

TELLING THE STORY

- Share stories of successful, innovative conservation far and wide.
 - Hold up local exemplars to highlight the "doers and doers" working on sagebrush rangeland restoration.
 - Gain broad based support to further, cross-boundary sagebrush conservation.

Strategies for Collaborative Conservation - Blending Science and Management

- Collaborative Conservation in Action: Examples from across the West:
 - Bruneau-Owyhee Sage Grouse Habitat Project
 - Nevada Bi-State Local Area Implementation Team
 - Southwest Montana Sagebrush Conservation Partnership
 - Northwest Colorado- Sagebrush Habitat Conservation
 - Outcome Based Grazing Authorizations
- Models for Successful Conservation Collaboratives :
 - Partnerships across ownerships
 - Roles identified and a plan
 - Landscape scale (horizon to horizon)
 - Locally driven
 - Creative and innovative
 - Connecting Science, People and Land Management



CONNECTING LANDSCAPES

PUBLIC LANDS



FORESTS

- Forest Thinning
- Prescribed burning



SAGEBRUSH UPLANDS

- Mesic restoration
- Invasive species control/removal
- Targeted conifer removal
- Low-tech, process-based restoration
- Wildlife-friendly fencing
- Road crossings
- Conservation Easements



WETLANDS

- Flood irrigation
- Habitat Incentive Programs
- Conservation Easements



LAND MANAGERS

RIVERS

- Fish passage
- Riparian restoration
- In-stream flows

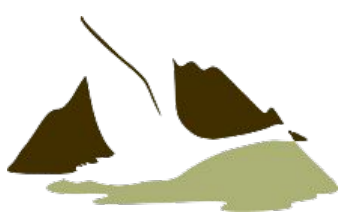


PASTURE

- Rotational/Prescribed grazing
- Flood irrigation
- Soil Health/Carbon Sequestration
- Conservation Easements



PRIVATE LANDS



IWJV Boundary & Early Water 4 Focus Areas

Water 4 Toolbox

- Modernization of Flood Irrigation Infrastructure
- Conservation Easements
- Low-Tech Riparian Restoration
- Wet Meadow Restoration
- Reconnecting Rivers to Floodplains





Water 4 - Science informing actions

- Work across species/habitat focus - landscape connectivity
- Partnerships - work across landscapes and think broadly
- Forms/Methods
 - Planning
 - Implementation
 - Funding
 - Strategic capacity
 - Policy (big P/little p)
- Science informing conservation actions, examples:
 - OR NRCS
 - CA NRCS
 - WA NRCS - ACEP - ALE
 - CO and UT NRCS - Targeted EQIP funds
 - CO strategic investments collaborations with TU
 - Informing/Driving conservation funds to the strategic geographies
 - Land Trust Community
 - Trout Unlimited